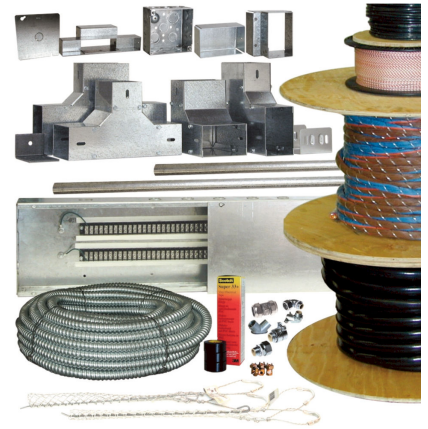


HOISTWAY JUNCTION BOXES, WIREWAYS AND FITTINGS



Wireway U/L

CWL425.10	2.5"H x 4"W x 120"L
CWL625.10	2.5"H x 6"W x 120"L
CW44	4"H x 4"W x 120"L

Comes with two (2) 60" covers and screws. 0.5/0.75" knockouts on 12" centers on both sides.

Wireway N/L

CW425.10	2.5"H x 4"W x 120"L
CW625.5	2.5"H x 6"W x 60"L

Comes with one (1) or two (2) 60" covers and screws. 0.5" knockouts on one side and continuous slots on another side for limit switch mounting.

Wireway Cover

CVR-25-U	2.5"W x 60"L
CVR4-U	4"W x 60"L

Cable Junction Box

TCJB-80	80 Wires, 3.25"H x 8.5"W x 24"L Knockouts 0.5/0.75" x 14, 1.25" x 4
TCJB-108	108 Wires, 3.25"H x 8.5"W x 36"L Knockouts 0.5/0.75" x 10, 1.25" x 8

Comes with cover assembly. 250VAC 20A, LR-85867, CSA-B44.1, ASME-A17.5

Wireway Connector

CWCON-25444	2.5"H x 4"W
CWCON-25646	2.5"H x 6"W

Wireway End Cap

CWEPT-254-U	2.5"H x 4"W
WEPT256-U	2.5"H x 6"W

Wireway Elbow 90°

CW90254	2.5"H x 4"W
CW90256	2.5"H x 6"W
CW90425	4"H x 2.5"W
CW90625	6"H x 2.5"W

Wireway Tee

CWT254	2.5"H x 4"W
WTEE-256	2.5"H x 6"W
CWT425	4"H x 2.5"W
WTEE-625	6"H x 2.5"W

ALSO AVAILABLE

- ADDITIONAL WIREWAY SIZES
- ADDITIONAL WIREWAY PARTS
- TRAVEL CABLES
- MULTI-CABLES
- INTERLOCK WIRE

**QUALITY
ELEVATOR PRODUCTS, INC.**