

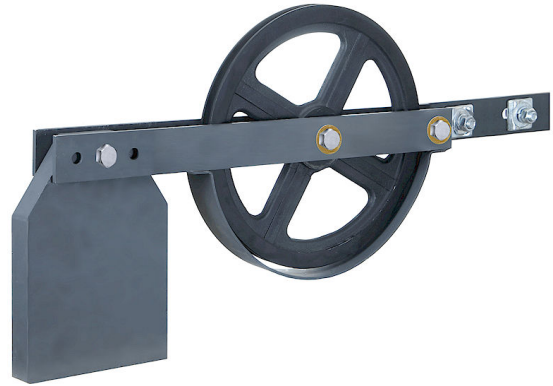
# TENSION WEIGHT AND SHEAVE ASSEMBLY

## Tension Weight and Sheave Assembly for Elevator Overspeed Governors

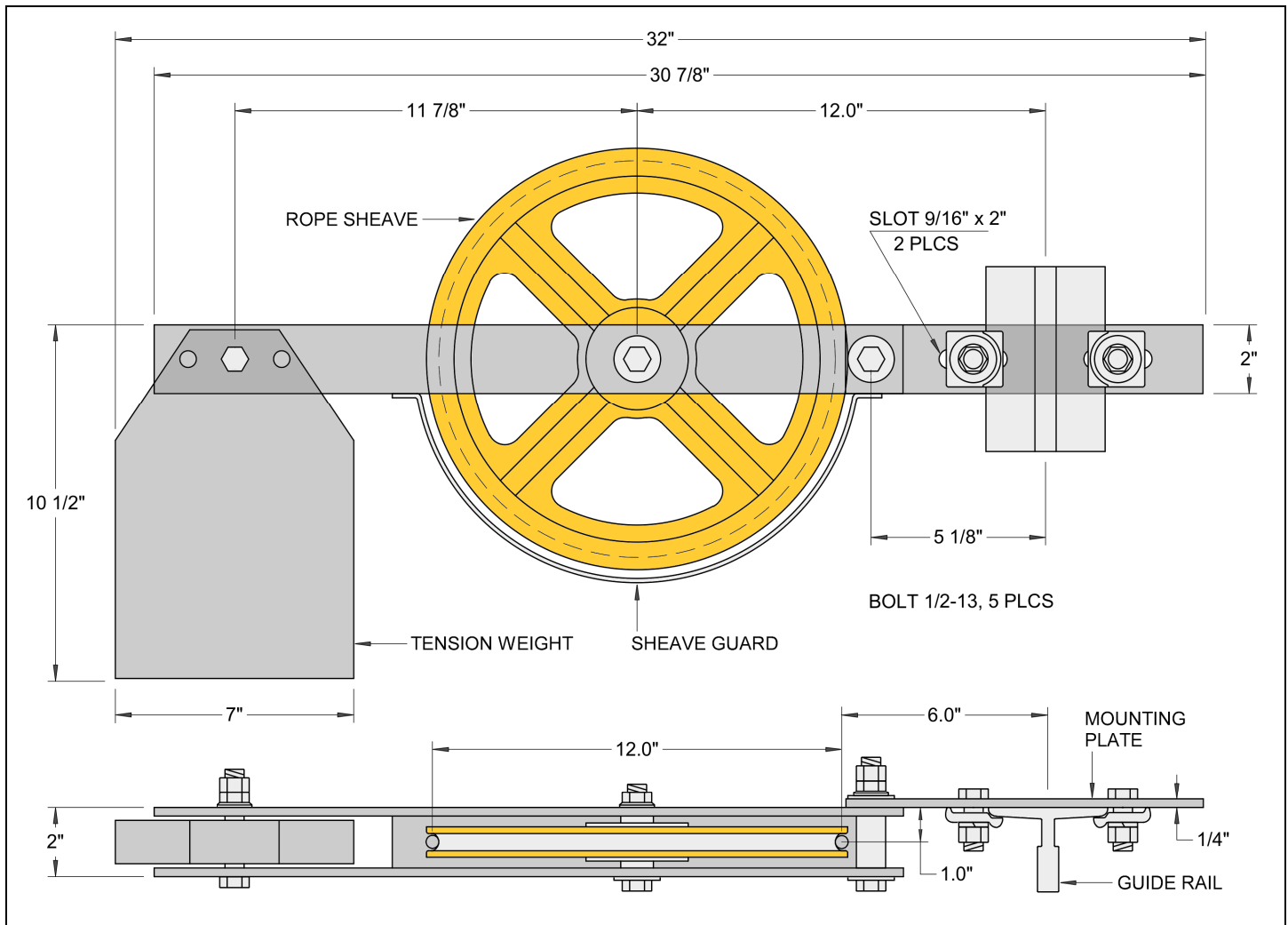
Horizontal or swing type tension weight designed to mount on the guide rail with two rail clips. Tension weight can be moved on the support arm to one of three positions. Depending on the position of the tension weight, the weight on pulley or tensile force can be 78.5 Lb, 83 Lb, and 87.5 Lb. Tension weight, sheave, sheave guard, mounting plate assembly, and set of two rail clips, bolts, nuts and lock washers are included.

### Model CEMTSH

- Rope size: 3/8"
- Rail size: 8 Lb/Ft, 12 Lb/Ft
- Sheave diameter: 12-3/8", 12" nominal
- Offset distance
  - Rail base to rope CL: 1.0" or 1.25"
  - Rail (8 Lb/Ft) CL to rope CL: 6.0", adjustment  $\pm 0.7$ "
  - Rail (12 Lb/Ft) CL to rope CL: 6.0", adjustment  $\pm 0.1$ "
- Weight
  - Weight on sheave: 83 Lb, adjustment  $\pm 4.5$  Lb.
  - Tension weight: 22.6 Lb.
  - Total weight: 45 Lb.



Mounting plate with custom offsets can be made, please inquire.



**QUALITY**  
**ELEVATOR** PRODUCTS, INC.