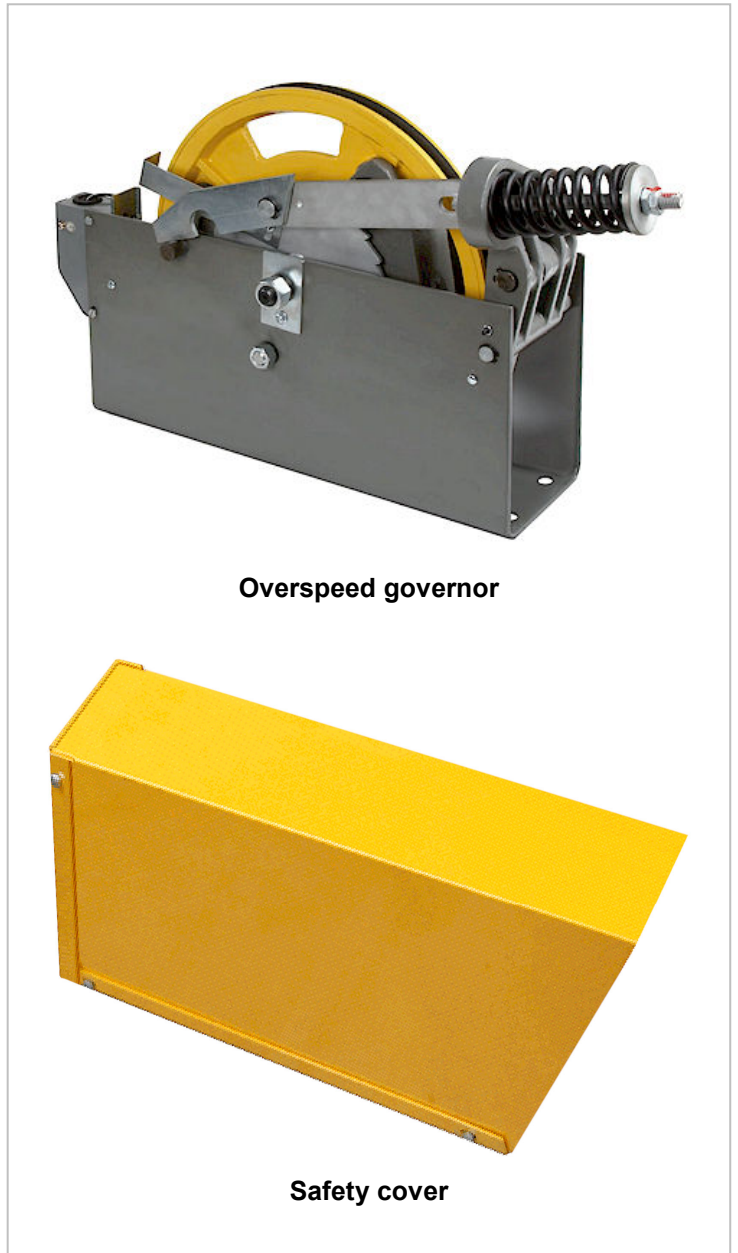


COMMERCIAL GOVERNOR FOR “A” AND “B” SAFETIES

Westinghouse Style Elevator Governor is a commercial governor for Type A and Type B Safeties. This Overspeed Governor designed for elevator speeds up to 350 FPM. Pull-through is adjustable from 330 to 550 pounds-force. Governor meets ASME A17.1 Code, comes with a UL Overspeed manual reset switch, automatic mechanical reset installed and active, and safety enclosure. Automatic mechanical reset can be removed and governor will require a manual reset after lock activation. Each governor preset to 400 LB pull-through force, electrical switch trip speed, mechanical lock trip speed, tested and sealed in the USA. Governor weight is 75 LB.

- ASME A17.1 Code Compliant
- Type A and B compatible
- Elevator speed up to 350 FPM
- Manual reset Overspeed electrical switch
- UL Overspeed switch NC, 2A @ 230VAC
- Electrical switch tripping speed 155 - 407 FPM
- Automatic or manual mechanical lock reset
- Mechanical lock tripping speed 175 - 452 FPM
- Pull through force 400 LB, factory adjusted
- Ductile cast iron wheel, 12” Dia. with 3/8” groove
- Designed for 3/8” 8x19 traction steel cable
- Safety enclosure 13.8”H x 7.8”W x 24.3”L, included
- Enclosure weight 24 LB
- Governor weight 75 LB



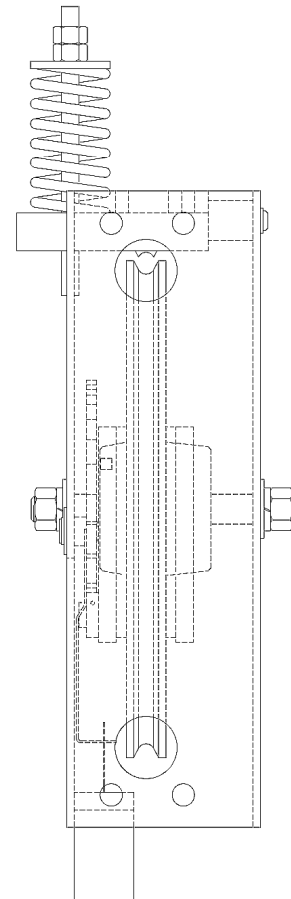
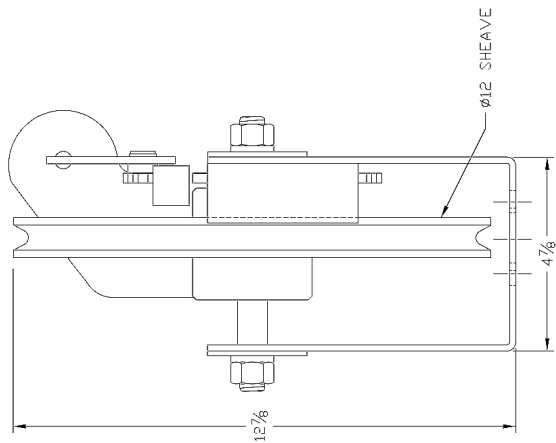
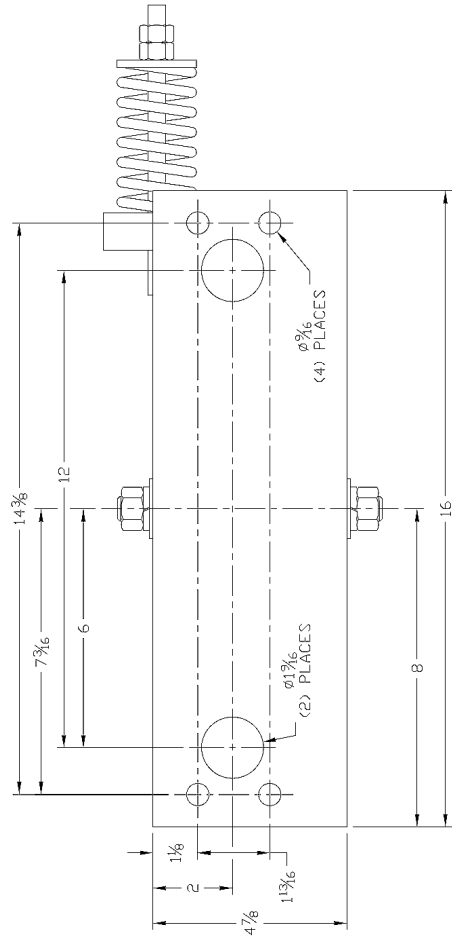
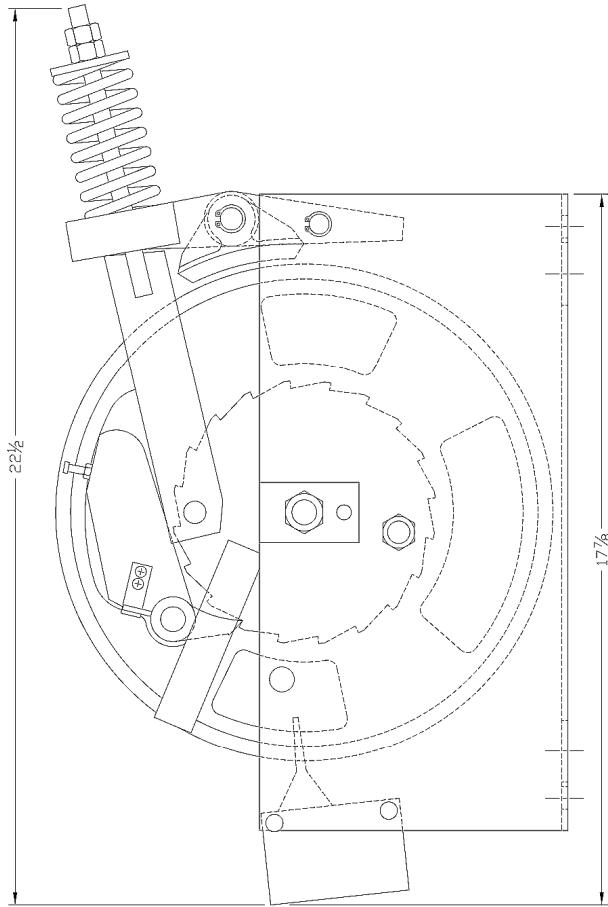
Overspeed governor

Safety cover

Model	Rated Car Speed FPM	Electrical Trip Speed FPM	Mechanical Trip Speed FPM
CM-2685	0-125	155	175
CM-2685-210	150	187	210
CM-2685-280	200	252	280
CM-2685-337	250	303	337
CM-2685-452	350	407	452

**QUALITY
ELEVATOR PRODUCTS, INC.**

Commercial Governor (2020)



QUALITY
ELEVATOR PRODUCTS, INC.

• Phone: (847) 581-0085 • Fax: (847) 581-0095 • www.qualityelev.com