

ELEVATOR DOOR KEY ESCUTCHEONS

ESCUTCHEON CAPS

Nickel-plated steel snap-in caps, 5/8" x 1"OD, require 0.8" door hole.

- Model DEWT** For Westinghouse T-Key
Model DEWL For Westinghouse Lunar Key



ESCUTCHEON PLATES

1-3/4" x 1-1/2" x 0.046" plates, 1/8"DIA x 4 mounting holes.

Model	Description
02NE	Nickel-plated steel, 7/16" clear hole, for GAL, Otis, etc.
WT9E	Nickel-plated steel, for Westinghouse T-Key
WT9ESS	Stainless steel, for Westinghouse T-Key
WT9EBB	Bronze (#4), brushed, for Westinghouse T-Key
WL6E	Nickel-plated steel, for Westinghouse Lunar Key
WL6EBB	Bronze (#4), brushed, for Westinghouse Lunar Key
WL6EMB	Bronze (#8), mirrored, for Westinghouse Lunar Key
OLTE	Nickel-plated steel, for Otis Lunar Key



SLEEVE ESCUTCHEONS

Aluminum or anodized aluminum escutcheons with 7/16" clear hole. Sleeve 7/16"ID x 1/2"OD, face 1/16" x 11/16"OD. Black retainer steel clip is included. Fits GAL, GDK, Otis, Dover, Mac, etc.

Model	Description
DEC	Aluminum #4, 2" long
DEC-4.5	Aluminum #4, 4-1/2" long
DEB	Anodized aluminum, bronze #4, 2" long
DEB-4.5	Anodized aluminum, bronze #4, 4-1/2" long
DEBL	Anodized aluminum, black #4, 2" long

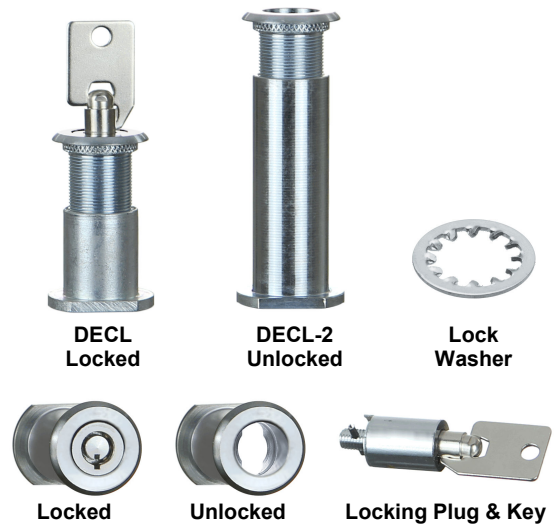
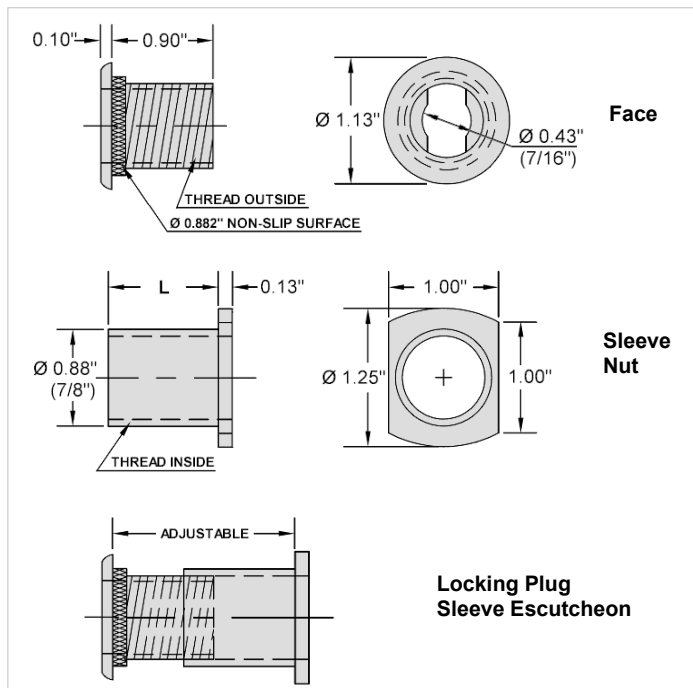
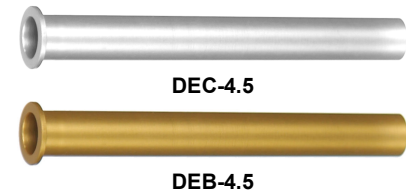


LOCKING PLUG SLEEVE ESCUTCHEONS

Designed to secure door lock release sleeves by removable locking plug. Chrome-plated locking plug, zinc-plated sleeve. Requires 7/8" DIA door hole. Face is 1-1/8"OD.

Two (2) barrel keys and one (1) internal tooth lock washer are included.

- Model DECL** For doors up to 1-3/4" thick, L = 1.0"
Model DECL-2 For doors 2-1/2" to 3-1/4" thick, L = 2.5"
Model K01DE001 Key only, for DECL or DECL-2 locking plug



QUALITY ELEVATOR PRODUCTS, INC.