



QUALITY ELEVATOR PRODUCTS, INC.

7760 Merrimac Avenue • Niles, Illinois • 60714
 847-581-0085 • Fax 847-581-0095 • www.qualityelev.com

BUFFER SPRING STAND WORKSHEET AND QUOTE FORM

Name: _____ Quote/PO: _____
 E-mail: _____ Phone: _____
 Company: _____ Date: _____
 Address: _____

Stand Data

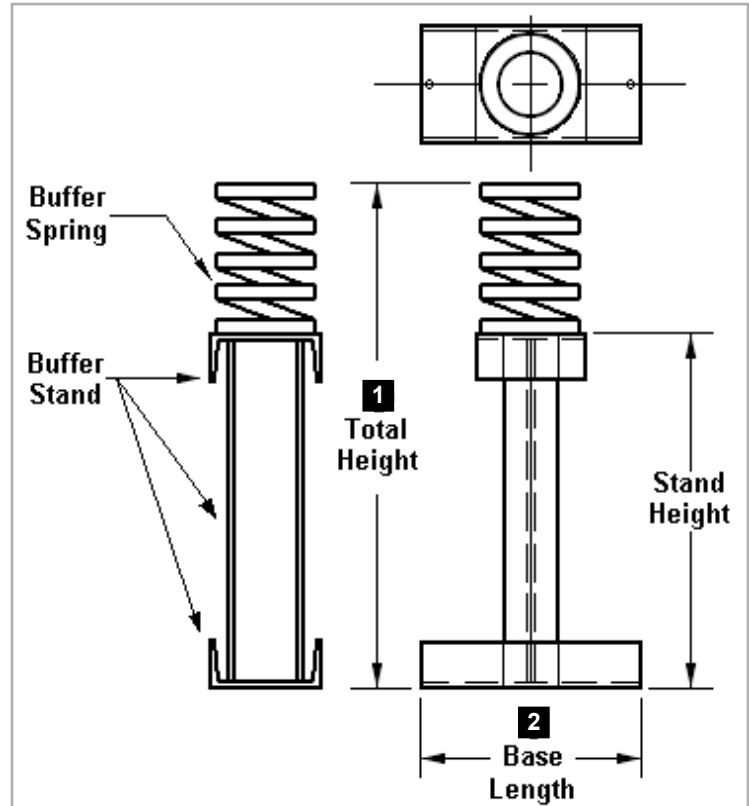
1 Total Height: _____
2 Total Length: _____
 Gross Load: _____
 Stands Quantity: _____
 Include one of the springs (if necessary):

Model: BUF:
 • 9" H, 5-1/2" OD, 3-3/8" ID
 • 1-1/16" wire
 • Max. Solid Capacity - 10,721 lb
 • Rating - 4,288 lb/in with 2-1/2" stroke

Model: BUF2:
 • 8-1/4" H, 2-15/16" OD, 1-1/2" ID
 • 11/16" wire
 • Max. Solid Capacity - 5,386 lb
 • Rating - 3,314 lb/in with 1-5/8" stroke

Model: BUF3:
 • 12-3/4" H, 3-3/4" OD, 2-1/2" ID
 • 11/16" wire
 • Max. Solid Capacity - 3,505 lb
 • Rating - 1,275 lb/in with 2-3/4" stroke

Note:
 Stands are custom made and non-returnable.
 Please recheck before submitting.



Notes

Please fill out the form and e-mail it to sales@qualityelev.com or fax it to 847-581-0095.